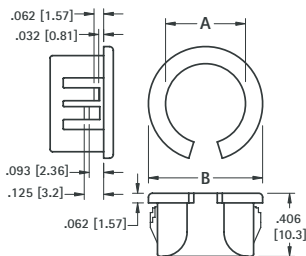


# NYLON 6/6 SPLIT BUSHINGS

Designed to be assembled into holes that already contain wire or cable. Versatile bushing can be used on all chassis from .032 (.81) to .125 (3.2) thick.

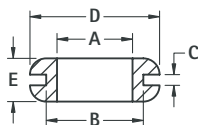
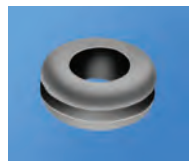


CAT. NO.	HOLE SIZE REQUIRED	A INSIDE DIAMETER	B HEAD DIAMETER
8490	.375 (9.5)	.265 (6.7)	.421 (10.7)
8491	.500 (12.7)	.312 (7.9)	.562 (14.3)
8492	.562 (14.3)	.390 (9.9)	.640 (16.3)
8493	.625 (15.9)	.453 (11.5)	.687 (17.4)
8494	.750 (19.1)	.546 (13.9)	.796 (20.2)
8495	.875 (22.2)	.671 (17.0)	.921 (23.4)
8496	1.000 (25.4)	.796 (20.2)	1.062 (27.0)

**MATERIAL:** Nylon 6/6, Black

# RUBBER GROMMETS

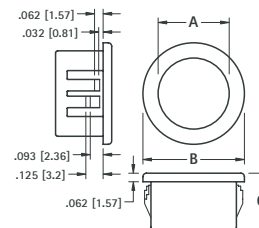
Ideal for electrical insulation and mechanical damping.



**MATERIAL:** Rubber, BUNA S

CAT. NO.	A INSIDE DIAMETER	B MTG. HOLE	C PANEL THICKNESS	D	E
730	.125 (3.2)	.187 (4.7)	.062 (1.57)	.312 (7.9)	.187 (4.7)
733	.125 (3.2)	.250 (6.4)	.062 (1.57)	.343 (8.7)	.187 (4.7)
734	.125 (3.2)	.437 (11.1)	.062 (1.57)	.625 (15.9)	.187 (4.7)
735	.125 (3.2)	.375 (9.5)	.093 (2.36)	.500 (12.7)	.312 (7.9)
736	.187 (4.7)	.312 (7.9)	.062 (1.57)	.437 (11.1)	.218 (5.5)
737	.187 (4.7)	.281 (7.2)	.093 (2.36)	.437 (11.1)	.218 (5.5)
738	.250 (6.4)	.437 (11.1)	.062 (1.57)	.625 (15.9)	.187 (4.7)
739	.250 (6.4)	.375 (9.5)	.062 (1.57)	.562 (14.3)	.250 (6.4)
740	.250 (6.4)	.375 (9.5)	.093 (2.36)	.500 (12.7)	.250 (6.4)
741	.312 (7.9)	.562 (14.3)	.062 (1.57)	.812 (20.6)	.312 (7.9)
742	.312 (7.9)	.437 (11.1)	.062 (1.57)	.625 (15.9)	.281 (7.1)
743	.312 (7.9)	.437 (11.1)	.093 (2.36)	.625 (15.9)	.312 (7.9)
744	.375 (9.5)	.625 (15.9)	.062 (1.57)	.875 (22.2)	.312 (7.9)
745	.375 (9.5)	.500 (12.7)	.062 (1.57)	.625 (15.9)	.250 (6.4)
732	.437 (11.1)	.562 (14.3)	.062 (1.57)	.750 (19.1)	.250 (6.4)
746	.437 (11.1)	.687 (17.4)	.062 (1.57)	.937 (23.8)	.312 (7.9)
747	.500 (12.7)	.812 (20.6)	.062 (1.57)	1.062 (27.0)	.312 (7.9)
748	.500 (12.7)	1.250 (31.8)	.062 (1.57)	1.500 (38.1)	.250 (6.4)
749	.500 (12.7)	.750 (19.1)	.093 (2.36)	.968 (24.6)	.281 (7.1)
750	.562 (14.3)	.812 (20.6)	.062 (1.57)	1.062 (27.0)	.312 (7.9)
752	.625 (15.9)	.875 (22.2)	.062 (1.57)	1.125 (28.6)	.312 (7.9)
753	.625 (15.9)	1.250 (31.8)	.062 (1.57)	1.500 (38.1)	.250 (6.4)
755	.750 (19.1)	1.062 (27.0)	.062 (1.57)	1.375 (34.9)	.375 (9.5)
756	.750 (19.1)	1.437 (36.5)	.062 (1.57)	1.812 (46.0)	.375 (9.5)
757	.875 (22.2)	1.250 (31.8)	.062 (1.57)	1.625 (41.3)	.437 (11.1)

Snaps into panel hole to provide protection for wire, cable and tubing from sharp uneven edges.

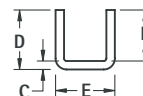
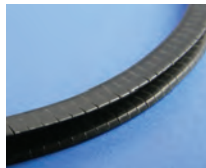


**MATERIAL:** Nylon 6/6, Black

CAT. NO.	HOLE SIZE REQUIRED	MAXIMUM CHASSIS THICKNESS	A INSIDE DIAMETER	B HEAD DIAMETER	C OVERALL HEIGHT
8470	.250 (6.4)	.062 (1.57)	.125 (3.2)	.312 (7.9)	.312 (7.9)
8471	.312 (7.9)	.062 (1.57)	.187 (4.7)	.375 (9.5)	.312 (7.9)
8472	.375 (9.5)	.125 (3.2)	.250 (6.4)	.468 (11.9)	.406 (10.3)
8473	.437 (11.1)	.125 (3.2)	.312 (7.9)	.531 (13.5)	.406 (10.3)
8474	.500 (12.7)	.125 (3.2)	.375 (9.5)	.578 (14.7)	.406 (10.3)
8475	.562 (14.3)	.125 (3.2)	.437 (11.1)	.656 (16.7)	.406 (10.3)
8476	.625 (15.9)	.125 (3.2)	.500 (12.7)	.718 (18.2)	.406 (10.3)
8477	.750 (19.1)	.125 (3.2)	.562 (14.3)	.843 (21.4)	.406 (10.3)
8478	.875 (22.2)	.125 (3.2)	.625 (15.9)	.953 (24.2)	.453 (11.5)
8479	1.000 (25.4)	.125 (3.2)	.750 (19.1)	1.125 (28.6)	.453 (11.5)
8480	1.187 (30.1)	.125 (3.2)	.937 (23.8)	1.312 (33.3)	.453 (11.5)
8481	1.250 (31.8)	.125 (3.2)	.937 (23.8)	1.359 (34.5)	.453 (11.5)
8482	1.375 (34.9)	.125 (3.2)	1.000 (25.4)	1.468 (37.3)	.453 (11.5)
8483	1.500 (38.1)	.125 (3.2)	1.062 (27.0)	1.609 (40.9)	.453 (11.5)
8484	1.750 (44.5)	.125 (3.2)	1.375 (34.9)	1.875 (47.6)	.453 (11.5)
8485	2.000 (50.8)	.125 (3.2)	1.625 (41.3)	2.125 (54.0)	.453 (11.5)
8486	2.500 (63.5)	.250 (6.4)	1.968 (50.0)	2.656 (67.5)	.718 (18.2)

# FLEXIBLE GROMMETING

Ideal for maintenance, short-run production, R&D or prototyping. Supplied in 25 ft. rolls. Make your own grommets to fit any size or shape required.



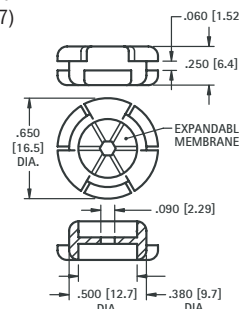
**MATERIAL:** Nylon 6/6, Black

CAT. NO.	MAX PANEL	B	C	D	E
8615	.052 (1.32)	.135 (3.4)	0.55 (1.4)	.190 (4.8)	.139 (3.5)
8616	.085 (2.16)	.145 (3.7)	0.55 (1.4)	.200 (5.1)	.182 (4.6)
8617	.125 (3.18)	.165 (4.2)	0.55 (1.4)	.220 (5.6)	.232 (5.9)

# "UNIVERSAL" RUBBER GROMMET

Designed to adjust to different wire, cable or tubing diameters from .125 (3.2) to .312 (7.9)

- Self-adjusting membrane forms a dust resistant seal
- Installs in .500 (12.7) diameter hole in .062 (1.57) thick panels or boards
- Molded outer ring retains grommet in place



**CAT. NO. 777**

**MATERIAL:** Thermoplastic Rubber, Black